



# The New Golf

Effective from 21.03.2024



## New designs

Harmoniously coordinated: With optional illuminated front Volkswagen logo and stylish bumpers, the Golf knows how to impress visually. The new headlights and tail light clusters with optional dynamic turn signals make it a real eye-catcher.



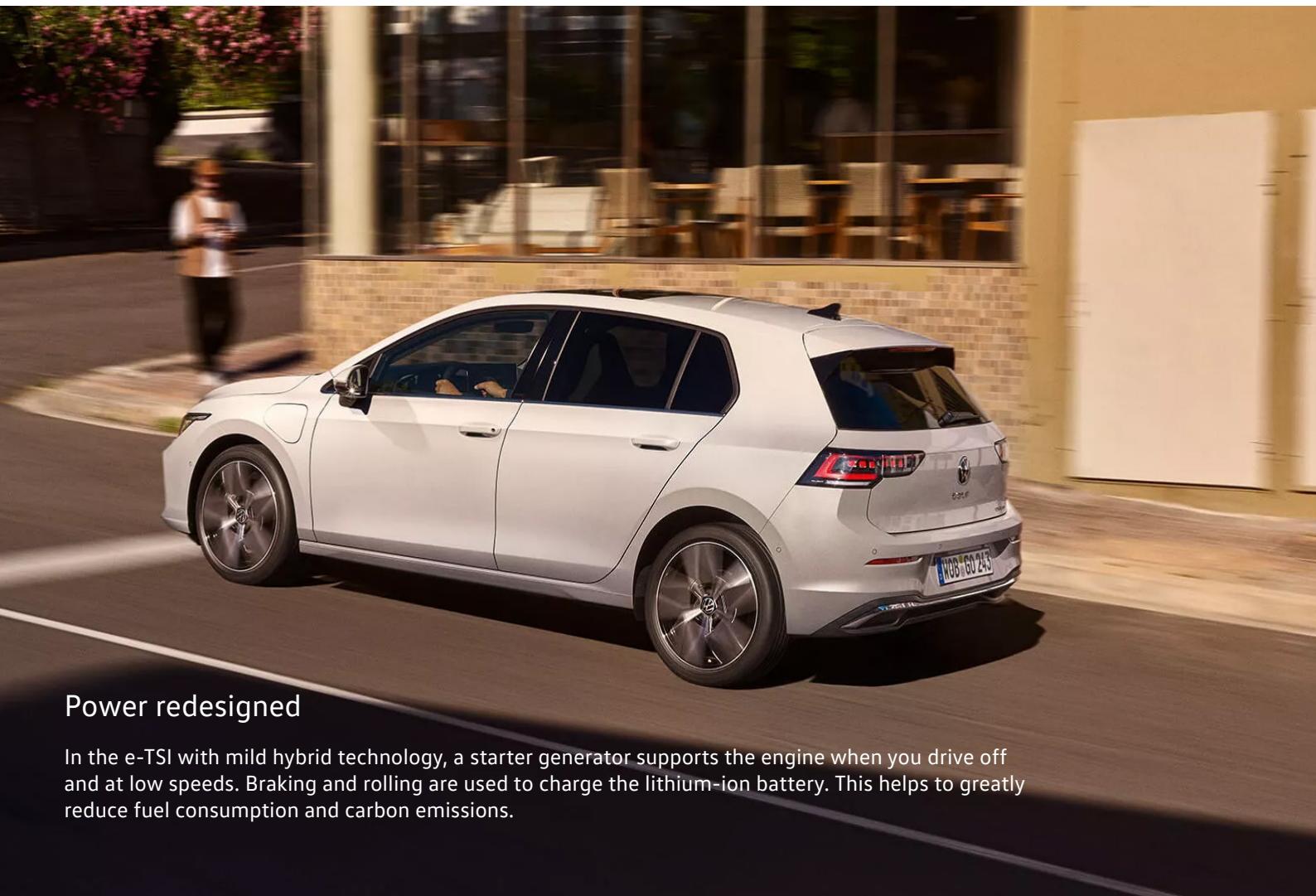
## Comfortable interiors

More Golf, more style: New topsport seats in leather Vienna (optional on Style) and the high-gloss centre console lend the interior of the new Golf a more luxurious appearance





With the 12.9" infotainment display, you will also experience entertainment, news and navigation on a new level. Meanwhile, the multifunction steering wheel with classic push buttons adds to the comfort of your journey.



## Power redesigned

In the e-TSI with mild hybrid technology, a starter generator supports the engine when you drive off and at low speeds. Braking and rolling are used to charge the lithium-ion battery. This helps to greatly reduce fuel consumption and carbon emissions.

## Let there be light

Regardless of where and when you are driving, we want you to have a clear view. The optional IQ.LIGHT LED matrix headlights with their high-performance main beam ensure better night vision and can light up the road up to a distance of 550 metres at night. The matrix technology enables you to permanently drive with main beam without dazzling other road users. In addition, the energy-saving headlights are extremely efficient.



## Say "Hello" to your Golf.

Optionally, the new infotainment system integrates the artificial-intelligence-based chatbot ChatGPT<sup>1</sup> into the IDA voice assistant. Offering a multitude of new capabilities that go far beyond the previous voice control. The voice assistant can be started with "Hello IDA" and be used to control the infotainment, navigation, and air conditioning, or to answer general knowledge questions.

Standard on PHEV models

<sup>1</sup> ChatGPT integration will be functional from July 2024.

# The New Golf

## Petrol

Code	Model Description	Transmission	Trim	Fuel	VRT <sup>1</sup>	Annual Motor Tax <sup>1</sup>	HP	Combined CO <sub>2</sub> (WLTP) <sup>2</sup>	Combined l/100km (WLTP) <sup>2</sup>	RRP <sup>3</sup>	Delivery <sup>3</sup>	ROTR*
DA13BX	GOLF LIFE 1.5 TSI 115HP	Manual	Life	Petrol	16.75%	€200	115	123	5.4	€32,680	€1,665	€34,345
DA13BX	GOLF LAUNCH EDITION 1.5 TSI 115HP	Manual	Launch Edition	Petrol	16.75%	€200	115	123	5.4	€32,880	€1,665	€34,545
DA13BM	GOLF LIFE 1.5 TSI MHEV 115HP	Automatic	Life	Petrol	16.00%	€190	115	120	5.2	€35,180	€1,665	€36,845
DA13BM	GOLF LAUNCH EDITION 1.5 TSI MHEV 115HP	Automatic	Launch Edition	Petrol	TBC	TBC	115	TBC	TBC	€35,380	€1,665	€37,045
DA14EX	GOLF STYLE 1.5 TSI 150HP	Manual	Style	Petrol	16.75%	€200	150	124	5.5	€37,000	€1,665	€38,665
DA14BM	GOLF STYLE 1.5 TSI MHEV 115HP	Automatic	Style	Petrol	16.00%	€190	115	120	5.6	€37,850	€1,665	€39,515
DA15EX	GOLF R-LINE 1.5 TSI 150HP	Manual	R-Line	Petrol	16.75%	€200	150	124	5.5	€38,020	€1,665	€39,685
DA15BM	GOLF R-LINE 1.5 TSI MHEV 115HP	Automatic	R-Line	Petrol	16.00%	€190	115	120	5.5	€38,880	€1,665	€40,545
DA15EM	GOLF R-LINE 1.5 TSI MHEV 150HP	Automatic	R-Line	Petrol	16.25%	€200	150	121	5.5	€41,230	€1,665	€42,895

<sup>1</sup>VRT Bands and rate of Annual Motor Tax are valid as of 1st January 2022 and calculated from the base model WLTP values for model year 2024 cars produced from CW22/2024 onwards. All vehicles with TBC are subject to EU type approval and with that were not available at time of going to print.

<sup>2</sup>The specified fuel consumption and emission values are the official figures obtained from tests under standardised EU test conditions in accordance with the Worldwide Harmonized Light Vehicles Test Procedure (WLTP). The above values reflect the standard vehicle excluding additional equipment such as optional extras and accessories which may have an effect on the fuel consumption (l/100km) and CO<sub>2</sub> emissions produced. To discover exact values please configure your desired vehicle at [volkswagen.ie/build](https://volkswagen.ie/build). You can discover more about the WLTP at [volkswagen.ie/wltp](https://volkswagen.ie/wltp).

<sup>3</sup> All prices 'Retail' Delivery and ROTR' are recommended by Volkswagen Ireland and are inclusive of VAT. €1,665 includes optional VW New Vehicle Service Plan 'Services' Service Plan which can be removed upon request. Maximum Delivery charge with Service Plan removed is €950.

\*Recommended On the Road Price.

Importantly note that the rate at which your vehicle pays Vehicle Registration Tax may increase as a result of your vehicle configuration. For more information, please consult your local Authorised Volkswagen retailer.

In accordance with (EU) 2020/740 ("Tire Labeling Regulation"), please visit [volkswagen.ie](https://volkswagen.ie) configurator for details relating to the tyres applicable to said vehicles.

Please note every effort has been made to ensure the contents of this publication (including RRP, CO<sub>2</sub>, fuel consumption and technical information) were accurate and up-to-date at the time of going to print 21st March 2024. Volkswagen Ireland reserves the right to change specification, prices and withdraw products from sale without notice. Any such alternations will be notified to Volkswagen Retailers at the earliest opportunity. Please consult your local Authorised Volkswagen retailer for the latest product information.

3 Years Tyre Insurance covers tyres that are damaged by an Insured Event. Exclusions do apply. For more information on general terms and conditions, please click here <https://www.volkswagen.ie/en/owners-and-users/wheels-and-tyres.html>

# The New Golf

## Petrol/**Electric**

Code	Model Description	Transmission	Trim	Fuel	VRT <sup>1</sup>	Annual Motor Tax <sup>1</sup>	HP	Combined CO <sub>2</sub> (WLTP) <sup>2</sup>	Combined I/100km (WLTP) <sup>2</sup>	RRP <sup>3</sup>	Delivery <sup>3</sup>	ROTR*
DA14HY	GOLF STYLE 1.5 TSI 150HP DSG eHybrid	Automatic	Style	Petrol PHEV	TBC	TBC	150	TBC	TBC	€49,990	€1,665	€51,655



Note: PHEV = Plug-In-Hybrid Electric Vehicle

<sup>1</sup>VRT Bands and rate of Annual Motor Tax are valid as of 1st January 2022 and calculated from the base model WLTP values for model year 2024 cars produced from CW22/2024 onwards. All vehicles with TBC are subject to EU type approval and with that were not available at time of going to print.

<sup>2</sup>The specified fuel consumption and emission values are the official figures obtained from tests under standardised EU test conditions in accordance with the Worldwide Harmonized Light Vehicles Test Procedure (WLTP). The above values reflect the standard vehicle excluding additional equipment such as optional extras and accessories which may have an effect on the fuel consumption (l/100km) and CO<sub>2</sub> emissions produced. WLTP range values for standard vehicles may vary depending on equipment. In practice, the actual range varies depending on driving style, speed, use of convenience/auxiliary equipment, outside temperature, number of passengers/additional load, and topography. To discover exact values please configure your desired vehicle at [volkswagen.ie/build](https://volkswagen.ie/build). You can discover more about the WLTP at [volkswagen.ie/wltp](https://volkswagen.ie/wltp).

<sup>3</sup> All prices 'Retail' Delivery and ROTR' are recommended by Volkswagen Ireland and are inclusive of VAT. €1,665 includes optional VW New Vehicle Service Plan <sup>(3 Services)</sup> Service Plan which can be removed upon request. Maximum Delivery charge with Service Plan removed is €950.

\*Recommended On the Road Price.

Importantly note that the rate at which your vehicle pays Vehicle Registration Tax may increase as a result of your vehicle configuration. For more information, please consult your local Authorised Volkswagen retailer.

In accordance with (EU) 2020/740 ("Tire Labeling Regulation"), please visit [volkswagen.ie](https://volkswagen.ie) configurator for details relating to the tyres applicable to said vehicles.

Please note every effort has been made to ensure the contents of this publication (including RRP, CO<sub>2</sub>, fuel consumption and technical information) were accurate and up-to-date at the time of going print 21st March 2024. Volkswagen Ireland reserves the right to change specification, prices and withdraw products from sale without notice. Any such alternations will be notified to Volkswagen Retailers at the earliest opportunity. Please consult your local Authorised Volkswagen retailer for the latest product information.

3 Years Tyre Insurance covers tyres that are damaged by an Insured Event. Exclusions do apply. For more information on general terms and

# The New Golf

## Diesel

Code	Model Description	Transmission	Trim	Fuel	VRT <sup>1</sup>	Annual Motor Tax <sup>1</sup>	HP	Combined CO <sub>2</sub> (WLTP) <sup>2</sup>	Combined I/100km (WLTP) <sup>2</sup>	RRP <sup>3</sup>	Delivery <sup>3</sup>	ROTR*
DA132X	GOLF LIFE 2.0 TDI 115HP	Manual	Life	Diesel	TBC	TBC	115	TBC	TBC	€35,730	€1,665	€37,395
DA132X	GOLF LAUNCH EDITION 2.0 TDI 115HP	Manual	Launch Edition	Diesel	TBC	TBC	115	TBC	TBC	€35,930	€1,665	€37,595
DA142X	GOLF STYLE 2.0 TDI 115HP	Manual	Style	Diesel	TBC	TBC	115	TBC	TBC	€38,400	€1,665	€40,065
DA157Z	GOLF R-LINE 2.0 TDI 150HP	Automatic	R-Line	Diesel	TBC	TBC	150	TBC	TBC	€43,380	€1,665	€45,045



<sup>1</sup>VRT Bands and rate of Annual Motor Tax are valid as of 1st January 2022 and calculated from the base model WLTP values for model year 2024 cars produced from CW22/2024 onwards. All vehicles with TBC are subject to EU type approval and with that were not available at time of going to print.

<sup>2</sup>The specified fuel consumption and emission values are the official figures obtained from tests under standardised EU test conditions in accordance with the Worldwide Harmonized Light Vehicles Test Procedure (WLTP). The above values reflect the standard vehicle excluding additional equipment such as optional extras and accessories which may have an effect on the fuel consumption (l/100km) and CO<sub>2</sub> emissions produced. To discover exact values please configure your desired vehicle at [volkswagen.ie/build](https://volkswagen.ie/build). You can discover more about the WLTP at [volkswagen.ie/wltp](https://volkswagen.ie/wltp).

<sup>3</sup> All prices (Retail, Delivery and ROTR) are recommended by Volkswagen Ireland and are inclusive of VAT. €1,665 includes optional VW New Vehicle Service Plan (3 Services) Service Plan which can be removed upon request: Maximum Delivery charge with Service Plan removed is €950.

\*Recommended On the Road Price.

Importantly note that the rate at which your vehicle pays Vehicle Registration Tax may increase as a result of your vehicle configuration. For more information, please consult your local Authorised Volkswagen retailer.

In accordance with (EU) 2020/740 ("Tire Labeling Regulation"), please visit [volkswagen.ie](https://volkswagen.ie) configurator for details relating to the tyres applicable to said vehicles.

Please note every effort has been made to ensure the contents of this publication (including RRP, CO<sub>2</sub>, fuel consumption and technical information) were accurate and up-to-date at the time of going to print 21st March 2024. Volkswagen Ireland reserves the right to change specification, prices and withdraw products from sale without notice. Any such alternations will be notified to Volkswagen Retailers at the earliest opportunity. Please consult your local Authorised Volkswagen retailer for the latest product information.

3 Years Tyre Insurance covers tyres that are damaged by an Insured Event. Exclusions do apply. For more information on general terms and conditions, please click here <https://www.volkswagen.ie/en/owners-and-users/wheels-and-tyres.html>

# The New Golf Life

## Interior Equipment

- » Electric windows, front and rear
- » Instrument cluster with electronic speedometer, odometer, trip counter and tachometer
- » 2 LED reading lights in front and rear
- » Auto-dimming interior rear view mirror
- » Leather-wrapped multi-function steering wheel. For DSG incl. shifting paddles
- » Plastic gearshift knob/handle for DSG
- » Leather gearshift knob for Manual
- » Inserts of front seats and outer rear seats in fabric "Life"
- » Front and rear head restraints
- » Decorative inserts "Nature Cross Brushed" for dashboard and front door and trim panels
- » Front center armrest adjustable
- » Illuminated vanity mirrors in sun visors
- » Floor mats in front and rear
- » Standard pedal cluster
- » Rear seat bench unsplit, backrest split folding with center armrest
- » Unsplit molded headliner
- » Comfort seats with manual lumbar support in front
- » Manual height adjustment for front seats
- » Side and rear windows in heat-insulating glass
- » Chrome elements on power mirror and window switches, chrome trims on the vents
- » 10-colour ambient lighting

## Exterior Equipment

- » 16" Norfolk alloy wheels incl. wheel locks with extended theft protection
- » Automatic LED separate daytime running light and Coming Home feature
- » LED rear combination lamps
- » Rear fog lamp on one side, reversing
- » Laminated safety glass windshield heat- and sound-insulating
- » Antenna for FM reception
- » Body-coloured exterior mirror housings and door handles
- » Body-colored bumpers
- » Illuminated door handles
- » Exterior mirrors: with memory feature, power-folding/adjustable, separately heated
- » Rear exhaust tailpipe
- » Surround lighting with light projection

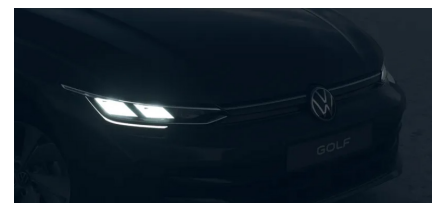
## Functional Equipment

- » 12.9" "Ready to Discover" radio
- » 6+1 speakers
- » Preparation for subsequent activation of Navigation system
- » Voice Enhancer
- » 2 USB-C interfaces in the front and 2 USB-C interfaces in the rear
- » VW Connect
- » Adaptive Cruise Control
- » Dynamic road sign display
- » Multifunction digital cockpit Pro with selection of different info profiles
- » Emergency Call Service
- » Wireless Charging (fast charge)
- » Keyless Start with SAFELOCK
- » Wired App Connect (Android Auto) and wireless App Connect (Apple CarPlay)
- » Park Distance control front and rear
- » Lane Keeping system 'Lane Assist'
- » Air conditioning system Climatronic
- » Tire Mobility Set with Tool-Kit
- » Two-tone horn
- » Rain Sensor
- » Central locking with SAFELOCK
- » Speed limiter with predictive control
- » Start/stop technology with regenerative braking
- » Dynamic headlight range control
- » Electromechanical speed-sensitive power steering
- » 12-V socket in luggage compartment
- » Anti-theft alarm system with interior monitoring, backup horn, and towing protection
- » Shock absorber in front
- » Electromechanical parking brake with auto hold function
- » Hill start assist



## Safety

- » Preparation for alcohol interlock
- » 3-point seat belts in front with height adjustment
- » First aid kit with warning triangle
- » Hand brake/low brake fluid level warning light
- » Driver's and front passenger's airbag with front passenger deactivation
- » Curtain airbag system in front and rear, side airbag in front, and centre airbag
- » Safety optimised front head restraints
- » ISOFIX anchorage points mounting fixtures for child seats on rear bench seat and on front passenger seat
- » Auto. Emergency Braking Front Assist with Pedestrian and Cyclist Monitoring
- » Electronic Stability Control and brake booster
- » UNECE cybersecurity & software
- » Tire Pressure Monitoring System
- » Warning buzzer and warning light for front and rear seat belts not fastened



## The New Golf Launch Edition (in addition to Life)

### Functional Equipment

- » Rear view camera
- » Keyless locking and starting system and Keyless Access with SAFELOCK
- » High Beam Control 'Light Assist'

### Exterior Equipment

- » 17" Nottingham alloy wheels
- » Metallic paint
- » Tinted windows



The above specifications are for information purposes only as our products are continually updated and changes may be made to the specifications at any time. If you require any specific feature, you must consult your local dealer who is regularly updated with any change in specification. Specifications are subject to change without notice.



# The New Golf Style (in addition to Life)

## Interior Equipment

- » ArtVelours microfleece seat coverings
- » Front sports seats
- » Decorative inserts "Style" for dashboard and front door trim panels
- » LED light unit in footwell in front and rear
- » 30 interior colour ambient lighting
- » Heated steering wheel

## Exterior Equipment

- » 17" Nottingham alloy wheels incl. anti-theft wheel locks and extended anti-theft protection
- » Upgraded LED headlight design incl. front fog lamp with cornering and poor weather light
- » Illuminated Volkswagen logo in front and molding between headlamps
- » LED Plus headlamps
- » Sports bumpers
- » Chrome molding on bottom of the side window



## Functional Equipment

- » High Beam Control 'Light Assist'
- » Lane change system Side Assist
- » Rear Traffic Alert
- » Semi-automated driving assistance Travel Assist and lane keeping system
- » 3-Zone Air Care climatronic air enhanced air filter and controls in rear
- » Keyless locking and starting system and Keyless Access with SAFELOCK
- » Rear view camera



Note: The above image displays colour Oryx White Pearl Effect

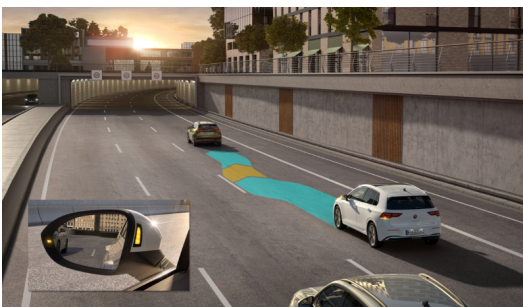
## Golf Style eHybrid

### Additional Equipment

- » 12.9" Navigation system "Discover"
- » IDA voice assistant and Voice Enhancer
- » Head-Up display
- » IQ Light: LED Matrix Headlights & Taillights
- » 3D LED rear combination lamps with dynamic turn signal
- » Dynamic cornering light
- » Advanced high-beam control
- » Dynamic light assist
- » Charging cable, mode 2, type 2 10A (domestic socket)
- » Charging cable mode 3 type 2, 32 A (AC wallbox/ AC charging unit)



Note: The above image displays the optional 18" Leeds Alloy Wheel



The above specifications are for information purposes only as our products are continually updated and changes may be made to the specifications at any time. If you require any specific feature, you must consult your local dealer who is regularly updated with any change in specification. Specifications are subject to change without notice.

# The New Golf R-Line (in addition to Life)

## Interior Equipment

- » Inserts of front and outer rear seats in fabric "R-Line" inner sides of bolsters in ArtVelours microfleece
- » Decorative inserts in "Mesh" for dashboard and front door side trim panels
- » 30 interior colour ambient lighting
- » Premium sports seats in front
- » Front head restraints integrated into the seat
- » Leather-wrapped multi-function sports steering wheel, heated, with shifting paddles for DSG
- » Pedals in brushed stainless steel
- » LED light unit in footwell in front and rear
- » Heated steering wheel

## Exterior Equipment

- » 18" York alloy wheels in black incl. wheel locks and extended theft protection
- » Body-colored bumpers in R-Line style
- » Tinted Rear Windows
- » Radiator grille with 'R-Line' logo

## Functional Equipment

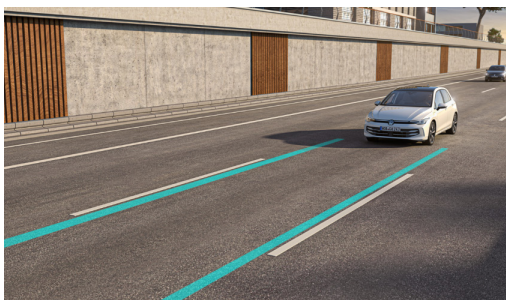
- » Progressive steering
- » Heated seats in front
- » Rear view camera
- » Keyless locking and starting system and Keyless Access with SAFELOCK
- » Sports suspension
- » Driving mode selection



Note: The above image displays colour Kings Red Metallic



Note: The above image displays DSG Gear Selector



Note: The above image displays colour Ice Blue Metallic

The above specifications are for information purposes only as our products are continually updated and changes may be made to the specifications at any time. If you require any specific feature, you must consult your local dealer who is regularly updated with any change in specification. Specifications are subject to change without notice.

# Options

The addition of optional extras may result in the vehicle increasing in Co2 g/km and therefore, attracting a higher rate of VRT than described in this product guide. For your exact configuration value, both Co2 g/km and RRP, please visit [volkswagen.ie](http://volkswagen.ie) configurator.

## Driver Assistance Systems

			Life	Launch Edition	Style	R-Line	Options Priced From RRP
PF1 PF2	DRIVER ASSISTANCE PACK	Incl. Travel Assist, Lane Assist and Emergency Assist. Proactive Passenger protection system	o	o	S	–	€680
8A2	PARK ASSIST PLUS	Available only on DSG models	o	o	o	o	€
2H5	DRIVING MODE SELECTION		–	–	o	S	€200
PLD	HIGH BEAM CONTROL 'LIGHT ASSIST'	Automatic activation and deactivation of main light beam. <sup>1</sup> Not available on PHEV model	o	S	S <sup>1</sup>	o	€170

## Functional

			Life	Launch Edition	Style	R-Line	Options Priced From RRP
KS1	HEAD-UP DISPLAY	<sup>1</sup> Standard on PHEV model	o	o	o <sup>1</sup>	o	€770
PLA	LIGHT & VISION PACK	Auto-dimming interior rearview mirror Rain sensor	S	S	o	–	€0
KA2	REAR VIEW CAMERA		o	S	S	S	€355
KA6	AREA VIEW INCL. REAR CAMERA		o	o	o	o	€785 €430
PSP	SPORT SUSPENSION	Note: Not available on DA14HY, DA142X	–	–	o	S	€260
PDD	ADAPTIVE CHASSIS CONTROL		–	–	–	o	€1,145 €950
6C4	SIDE AIRBAGS	Curtain and side airbags in front and rear, center airbag	o	o	o	o	€410

## Comfort

			Life	Launch Edition	Style	R-Line	Options Priced From RRP
KH7	3-ZONE CLIMATRONIC	3-Zone Climatronic Air Conditioning	–	–	S	o	€515

The addition of optional extras may result in the vehicle increasing in Co2 g/km and therefore, attracting a higher rate of VRT than described in this product guide. For your exact configuration value, both Co2 g/km and RRP, please visit [volkswagen.ie](http://volkswagen.ie) configurator.

For exact options prices for your vehicle, please contact your local dealer or visit [www.volkswagen.ie](http://www.volkswagen.ie)

S Standard   o Optional   – Not available

Note: Some options may require other options depending on the item and trim line.

# Options (continued)

The addition of optional extras may result in the vehicle increasing in Co2 g/km and therefore, attracting a higher rate of VRT than described in this product guide. For your exact configuration value, both Co2 g/km and RRP, please visit [volkswagen.ie](http://volkswagen.ie) configurator.

Styling			Life	Launch Edition	Style	R-Line	Options Priced From RRP
PS1	PANORAMIC SUNROOF	Tilting and sliding panoramic sunroof, electric	o	o	o	o	€1,240
WBS	BLACK STYLING PACK	Black Style surface appearance on wing mirrors and exhaust tips and black strip in grille <i>Note: Not available in conjunction with PXA or PXD</i>	–	–	–	o	€1,425
WBT	BLACK STYLING PACK WITH MATRIX	<i>Note: Not available in conjunction with PXA or PXD</i>	–	–	–	o	€2,575
PXA	LED PERFORMANCE HEADLAMPS	VW logo in front, illuminated molding between headlamps and illuminates door handle recesses without animation Cornering light and poor weather lightlight	–	–	S	o	€1,245
PXD	IQ. LIGHT LED MATRIX HEADLIGHTS AND TAILLIGHTS	<sup>1</sup> Standard on PHEV model	–	–	o <sup>1</sup>	–	€830
		VW logo in front, illuminated molding between headlamps and illuminates door handle recesses with animation; Advanced high-beam control Dynamic Light Assist; 3D LED rear combination lamps with dynamic turn signal; Dynamic headlight range control with dynamic cornering light Cornering light and poor weather lightlight;	–	–	–	o	€2,410
4KF	TINTED REAR WINDOWS	Tinted Rear and Side Windows	o	S	o	S	€330
PA1	AMBIENT LIGHTING MULTI-COLOURED	30-color ambient lighting LED light unit in front footwell selectable light color	o	o	S	S	€175
WL3	VIENNA LEATHER PACKAGE	"Vienna" Leather Package with Top Sports Seats and Electrically Adjustable Driver's Seat <i>Note: Not available on DA14BM</i>	–	–	o	–	€3,070
1M6	TRAILER HITCH	Folding trailer hitch, with electric release	o	o	o	o	€975

The addition of optional extras may result in the vehicle increasing in Co2 g/km and therefore, attracting a higher rate of VRT than described in this product guide. For your exact configuration value, both Co2 g/km and RRP, please visit [volkswagen.ie](http://volkswagen.ie) configurator.

For exact options prices for your vehicle, please contact your local dealer or visit [www.volkswagen.ie](http://www.volkswagen.ie)

<sup>1</sup>Standard on PHEV model

S Standard o Optional – Not available

Note: Some options may require other options depending on the item and trim line.

# Options (continued)

The addition of optional extras may result in the vehicle increasing in Co2 g/km and therefore, attracting a higher rate of VRT than described in this product guide. For your exact configuration value, both Co2 g/km and RRP, please visit [volkswagen.ie](http://volkswagen.ie) configurator.

Alloys			Life	Launch Edition	Style	R-Line	Options Priced From RRP
PI2	17" NOTTINGHAM ALLOY WHEEL	7.5J x 17 alloy wheels. Wheel locks with extended anti-theft protection. 225/45 R17 tyres.	o	S	S	–	€565
PJ4	18" CATANIA ALLOY WHEEL	7.5J x 18 alloy wheels in Black, diamond-turned surface Wheel locks with extended anti-theft protection. 225/40 R18 tyres.	–	–	o	–	€770
PJ5	18" LEEDS ALLOY WHEEL	7.5J x 18 alloy wheels in Black, diamond-turned surface, dark graphite insert. Wheel locks with extended anti-theft protection. 225/40 R18 tyres.	–	–	o	–	€880
						o	€110

Audio & Navigation			Life	Launch Edition	Style	R-Line	Options Priced From RRP
9VG	HARMON KARDON SOUNDSYSTEM	400W total output with 12-channel amplifier and sub-woofer <i>Note: Not available on DA14HY</i>	–	–	o	o	€745
RDA	NAVIGATION SYSTEM "DISCOVER"	<sup>1</sup> Standard on PHEV model Navigation system 12.9" display with 6+1 speakers IDA voice and Voice enhancer	o	o	o <sup>1</sup>	o	€960

Paints			Life	Launch Edition	Style	R-Line	Options Priced From RRP
MP0	SOLID PAINT - FREE	Urano Grey	o	–	o	o	€0
MP9	SOLID PAINT	Pure White	o	–	o	o	€360
			–	o	–	–	€0
MP1	METALLIC PAINT	Dolphin Grey and Lapiz Blue Metallic. <i>Note: Lapiz Blue only available on R-Line.</i>	o	–	o	o	€1,000
			–	o	–	–	€0
MP4	PEARL EFFECT PAINT	Oryx White Pearl Effect	o	–	o	o	€1,235
			–	o	–	–	€460
MP*	SOLID PAINT * Available from CW22	Moonstone Grey	o	–	o	o	€TBC
			–	o	–	–	€0
MP*	METALLIC PAINT * Available from CW22	Anemore Blue, Glacier Ice Blue, Grenadila Black, Oyster Silver. Kings Red <i>Note: Oyster Silver not available on Life and Launch Edition</i>					€TBC

The addition of optional extras may result in the vehicle increasing in Co2 g/km and therefore, attracting a higher rate of VRT than described in this product guide. For your exact configuration value, both Co2 g/km and RRP, please visit [volkswagen.ie](http://volkswagen.ie) configurator.

For exact options prices for your vehicle, please contact your local dealer or visit [www.volkswagen.ie](http://www.volkswagen.ie)

S Standard   o Optional   – Not available

Note: Some options may require other options depending on the item and trim line.

Effective from 21st March 2024, for production from CW22/2024 onwards. All prices include VAT and VRT. These prices are subject to change once technical data comes available.

# Colours



Urano Grey Solid

**5K5K**



Pure White Solid\*

**0Q0Q**



Moonstone Grey Solid\*

**C2C2**



Lapiz Blue Metallic\*<sup>1</sup>

**L9L9**



Dolphin Grey Metallic\*

**B0B0**



Kings Red Metallic\*  
Available from CW22

**P8P8**



Oryx White Pearl Effect\*\*

**0R0R**

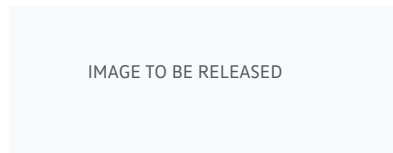


IMAGE TO BE RELEASED

Oyster Silver Metallic \*  
Available from CW22

**F0F0**

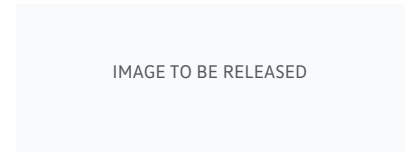


IMAGE TO BE RELEASED

Anemore Blue Metallic \*  
Available from CW22

**5R5R**

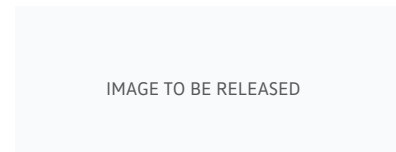


IMAGE TO BE RELEASED

Glacier Ice Blue Metallic\*  
Available from CW22

**3Y3Y**

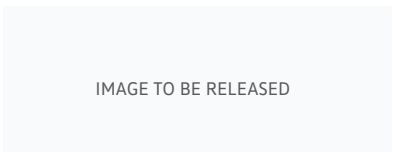


IMAGE TO BE RELEASED

Grenadilla Black Metallic\*  
Available from CW22

**0E0E**

*Please note, the print processes do not allow exact reproduction of the paint colours.*

\* Optional at extra cost. • <sup>1</sup>Only available on R-Line

# Upholstery (standard & optional)



**'Nature Cross' cloth**  
Storm Grey (BD)  
Standard on Life and Launch Edition



**'Brush Dark' cloth**  
Storm Grey (BD)  
Standard on Style



**'Mistral' cloth**  
Storm Grey (CR)  
Optional on Style models



**'Vienna' Leather WL3 Pack**  
Soul (BD)  
Option on Style models



**'R-Line' cloth**  
Anthracite (IR)  
Standard on R-Line models

\* Optional at extra cost. Please note, the print processes do not allow exact reproduction of the upholstery colours.

# Colour and Fabric Combinations

	Dashboard Upper/ Lower	Carpet	Headliner	Urano Grey Solid 5K5K	Pure White Solid* 0Q0Q	Moon- stone Grey Solid* C2C2	Kings Red Metallic* P8P8	Oyster Silver Metallic* F0F0	Dolphin Grey Metallic* B0B0	Grenadila Black Metallic* 0E0E	Anemore Blue Metallic* 5R5R	Lapiz Blue Metallic* L9L9	Glacier Ice Blue Metallic* 3Y3Y	Oryx White Pearl Effect* 0R0R	
<b>Life &amp; Launch Edition (Standard)</b>															
'Nature Cross' cloth	BD	Soul	Soul	Black	Storm Grey	o	o	o	o	-	o	o	-	o	o
<b>Style (Standard)</b>															
'Brush Dark' cloth	BD	Soul	Soul	Black	Storm Grey	o	o	o	o	o	o	o	-	o	o
'Mistral' cloth	CR	Storm Grey	Soul	Black	Storm Grey	o	o	o	o	o	o	o	-	o	o
<b>Style (Option)</b>															
'Vienna' Leather	BD	Soul	Soul	Black	Storm Grey	o	o	o	o	o	o	o	-	o	o
<b>R-Line (Standard)</b>															
'R-Line' cloth	IR	Anthracite	Titan Black	Black	Black	o	o	o	o	o	o	o	o	o	o
<b>R-Line (Option)</b>															
'Vienna' Leather	IR	Anthracite	Titan Black	Black	Black	o	o	o	o	o	o	o	o	o	o

- Not available   o Available   \* Optional at extra cost.



# Alloy Wheels

The addition of optional extras may result in the vehicle increasing in Co2 g/km and therefore, attracting a higher rate of VRT than described in this product guide. For your exact configuration value, both Co2 g/km and RRP, please visit [volkswagen.ie configurator](https://www.volkswagen.ie/configurator).



**STANDARD ON LIFE**

16" Norfolk alloy wheels

7J x 16 Tyres: 205/55 R16



**STANDARD ON LAUNCH EDITION & STYLE**

**Optional on Life**

17" Nottingham alloy wheels

7.5J x 17 Tyres: 225/45 R17



**STANDARD**

**Optional on Style and R-Line**

18" Leeds Alloy Wheel

7.5J x 18 Tyres: 225/40 R18



**STANDARD ON R-LINE**

18" York alloy wheels

7.5J x 18 Tyres: 225/40 R18



**OPTIONAL ON STYLE**

18" Catania Alloy Wheel

7.5J x 18 Tyres: 225/40 R18

The addition of optional extras may result in the vehicle increasing in Co2 g/km and therefore, attracting a higher rate of VRT than described in this product guide. For your exact configuration value, both Co2 g/km and RRP, please visit [volkswagen.ie configurator](https://www.volkswagen.ie/configurator).

# Technical Data

Engine	1.5 TSI 115HP <sup>1</sup>		1.5 TSI 150HP <sup>1</sup>	
Gearbox type	6 speed manual	7 speed auto DSG mHEV	6 speed manual	7 speed auto DSG mHEV
Engine type				
Fuel tank capacity, ltrs	45		45	
Cubic capacity, ltrs/cc	1.5/1,498		1.5/1,498	
Max. output, kW/HP	85/115		110/150	
Max. torque, Nm	220		220	
<b>Performance</b>				
Top speed, km/h, where the law permits:	203		224	224
Acceleration, secs 0 – 100km/h:	9.9		8.6	8.4
<b>Environmental information</b>				
<b>Official fuel consumption ltr per 100km:</b>				
<b>WLTP: (Min-Max)</b>				
Low speed consumption	7.2	6.8 - 6.9	7.2	7.0 - 7.2
Medium speed consumption	5.4	4.9 - 5.0	5.6	5.1 - 5.4
High speed consumption	4.7	4.4 - 4.6	4.9	4.6 - 4.9
Extra high speed consumption	5.4	5.4 - 5.6	5.6	5.6 - 6.1
Combined speed consumption	5.4	5.2 - 5.3	5.6	5.4 - 5.8
WLTP Emissions Combined, CO <sub>2</sub> g/km:	123	118 - 122	127-128	123 - 130
Emission class	EURO 6 EA		EURO 6 EA	

<sup>1</sup>VRT Bands and rate of annual Motor Tax are valid as of 1st January 2022 and calculated from the base model WLTP values for model year 2024 cars produced from CW22/2024 onwards. All vehicles with TBC are subject to EU type approval and with that were not available at time of going to print.

The specified fuel consumption and emission values are the official figures obtained from tests under standardised EU test conditions in accordance with the Worldwide Harmonized Light Vehicles Test Procedure (WLTP). The above values reflect the standard vehicle excluding additional equipment such as optional extras and accessories which may have an effect on the fuel consumption (l/100km) and CO<sub>2</sub> emissions produced. To discover exact values please configure your desired vehicle at [volkswagen.ie/build](https://volkswagen.ie/build). You can discover more about the WLTP at [volkswagen.ie/wltp](https://volkswagen.ie/wltp).

Importantly note that the rate at which your vehicle pays Vehicle Registration Tax may increase as a result of your vehicle configuration. For more information, please consult your local Authorised Volkswagen retailer.

In accordance with (EU) 2020/740 ("Tire Labeling Regulation"), please visit [volkswagen.ie](https://volkswagen.ie) configurator for details relating to the tyres applicable to said vehicles.

Please note every effort has been made to ensure the contents of this publication (including RRP, CO<sub>2</sub>, fuel consumption and technical information) were accurate and up-to-date at the time of going print 21st March 2024. Volkswagen Ireland reserves the right to change specification, prices and withdraw products from sale without notice. Any such alternations will be notified to Volkswagen Retailers at the earliest opportunity. Please consult your local Authorised Volkswagen retailer for the latest product information.

# Technical Data

## Engine

## 1.5 TSI 150HP PHEV<sup>1</sup>

Gearbox type	6 speed auto DSG
Engine type	TBC
Fuel tank capacity, ltrs	TBC
Cubic capacity, ltrs/cc	TBC
Max. output, kW/HP (Combustion engine only)	TBC
Max. torque, Nm	TBC

## Electric motor/ Charging system

Electrical power output, kW/HP (Electric motor only)	TBC
Combined Max Output, kW/HP	TBC
Combined Max torque, Nm	TBC
Battery Type	TBC
Battery energy capacity, kWh	TBC
Charging time: AC 2.3 kW, 100% State of Charge, hour:min	TBC
Charging time: AC 3.6 kW, 100% State of Charge, hour:min	TBC

## Electrical power consumption kWh/100km

Combined, kWh/100km	TBC
Electrical range, km	TBC

## WLTP emissions combined

WLTP CO <sub>2</sub> emission, g/km (min-max)	TBC
---	-----

<sup>1</sup>VRT Bands and rate of annual Moad Tax are valid as of 1st January 2022 and calculated from the base model WLTP values for model year 2024 cars produced from CW22/2024 onwards. All vehicles with TBC are subject to EU type approval and with that were not available at time of going to print.

The specified fuel consumption and emission values are the official figures obtained from tests under standardised EU test conditions in accordance with the Worldwide Harmonized Light Vehicles Test Procedure (WLTP). The above values reflect the standard vehicle excluding additional equipment such as optional extras and accessories which may have an effect on the fuel consumption (l/100km) and CO<sub>2</sub> emissions produced. WLTP range values for standard vehicles may vary depending on equipment. In practice, the actual range varies depending on driving style, speed, use of convenience/auxiliary equipment, outside temperature, number of passengers/additional load, and topography. To discover exact values please configure your desired vehicle at [volkswagen.ie/build](https://volkswagen.ie/build). You can discover more about the WLTP at [volkswagen.ie/wltp](https://volkswagen.ie/wltp).

Importantly note that the rate at which your vehicle pays Vehicle Registration Tax may increase as a result of your vehicle configuration. For more information, please consult your local Authorised Volkswagen retailer.

In accordance with (EU) 2020/740 ("Tire Labeling Regulation"), please visit [volkswagen.ie](https://volkswagen.ie) configurator for details relating to the tyres applicable to said vehicles.

Please note every effort has been made to ensure the contents of this publication (including RRP, CO<sub>2</sub>, fuel consumption and technical information) were accurate and up-to-date at the time of going to print 21st March 2024. Volkswagen Ireland reserves the right to change specification, prices and withdraw products from sale without notice. Any such alternations will be notified to Volkswagen Retailers at the earliest opportunity. Please consult your local Authorised Volkswagen retailer for the latest product information.

# Technical Data

Engine	2.0 TDI 115HP <sup>1</sup>		2.0 TDI 150HP <sup>1</sup>	
Gearbox type	6 speed manual	7 speed auto DSG	6 speed manual	7 speed auto DSG
Engine type	Four cylinder diesel		Four cylinder diesel	
Fuel tank capacity, ltrs	TBC		TBC	
Cubic capacity, ltrs/cc	TBC		TBC	
Max. output, kW/HP	TBC		TBC	
Max. torque, Nm	TBC		TBC	
<b>Performance</b>				
Top speed, km/h, where the law permits:	TBC		TBC	
Acceleration, secs 0 – 100km/h:	TBC		TBC	
<b>Environmental information</b>				
<b>Official fuel consumption ltr per 100km:</b>				
<b>WLTP: (Min-Max)</b>				
Low speed consumption	TBC	TBC	TBC	TBC
Medium speed consumption	TBC	TBC	TBC	TBC
High speed consumption	TBC	TBC	TBC	TBC
Extra high speed consumption	TBC	TBC	TBC	TBC
Combined speed consumption	TBC	TBC	TBC	TBC
WLTP Emissions Combined, CO <sub>2</sub> g/km:	TBC	TBC	TBC	TBC
Emission class	EURO 6 EA		EURO 6 EA	

<sup>1</sup>VRT Bands and rate of annual Motor Tax are valid as of 1st January 2022 and calculated from the base model WLTP values for model year 2024 cars produced from CW22/2024 onwards. All vehicles with TBC are subject to EU type approval and with that were not available at time of going to print.

The specified fuel consumption and emission values are the official figures obtained from tests under standardised EU test conditions in accordance with the Worldwide Harmonized Light Vehicles Test Procedure (WLTP). The above values reflect the standard vehicle excluding additional equipment such as optional extras and accessories which may have an effect on the fuel consumption (l/100km) and CO<sub>2</sub> emissions produced. To discover exact values please configure your desired vehicle at [volkswagen.ie/build](https://volkswagen.ie/build). You can discover more about the WLTP at [volkswagen.ie/wltp](https://volkswagen.ie/wltp).

Importantly note that the rate at which your vehicle pays Vehicle Registration Tax may increase as a result of your vehicle configuration. For more information, please consult your local Authorised Volkswagen retailer.

In accordance with (EU) 2020/740 ("Tire Labeling Regulation"), please visit [volkswagen.ie](https://volkswagen.ie) configurator for details relating to the tyres applicable to said vehicles.

Please note every effort has been made to ensure the contents of this publication (including RRP, CO<sub>2</sub>, fuel consumption and technical information) were accurate and up-to-date at the time of going to print 21st March 2024. Volkswagen Ireland reserves the right to change specification, prices and withdraw products from sale without notice. Any such alternations will be notified to Volkswagen Retailers at the earliest opportunity. Please consult your local Authorised Volkswagen retailer for the latest product information.